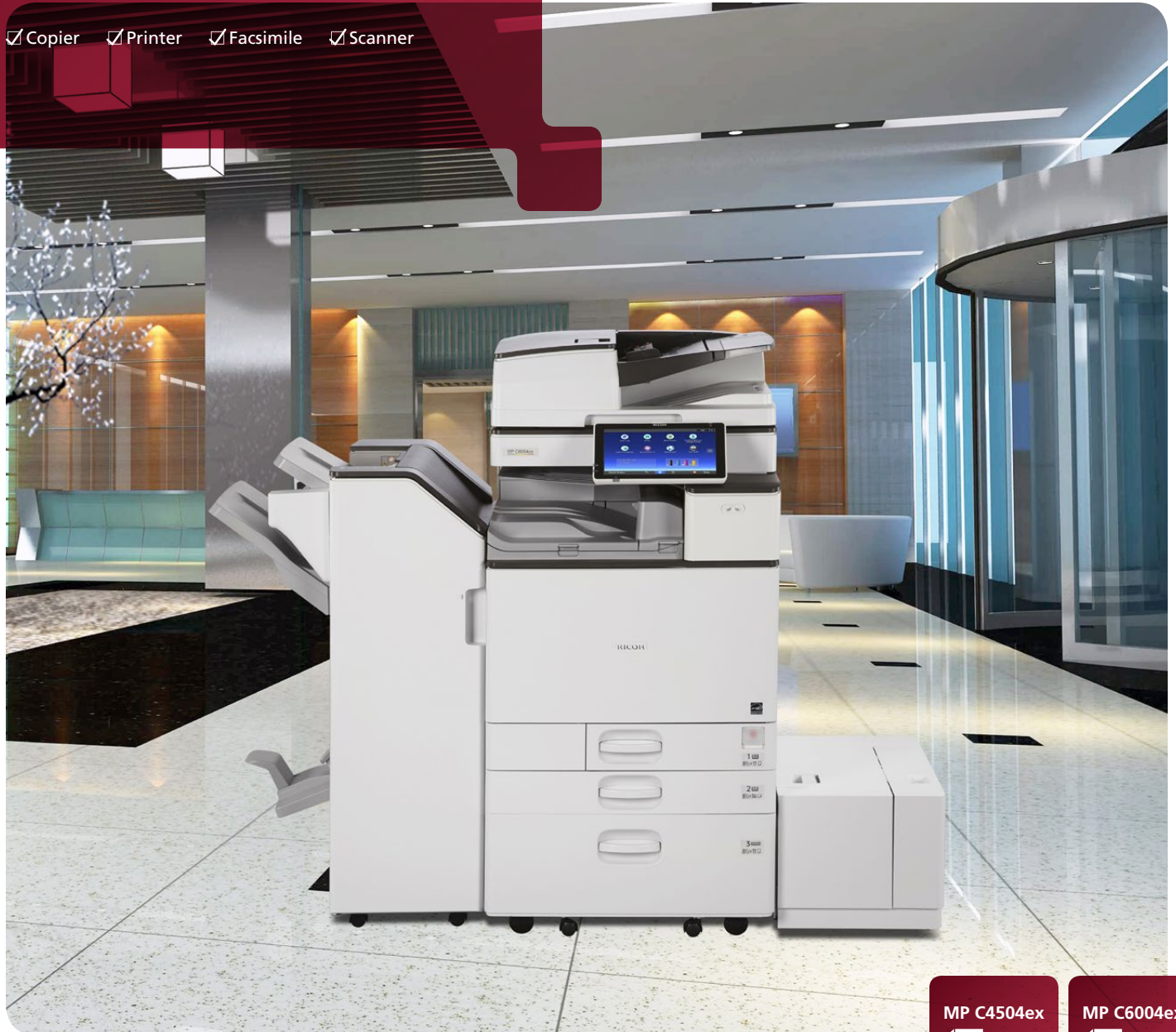


Multifunction Color

RICOH MP C4504ex/ MP C6004ex

Copier Printer Facsimile Scanner



RICOH
imagine. change.

MP C4504ex

45
ppm

monochrome
and full-color

MP C6004ex

60
ppm

monochrome
and full-color

Extend productivity in your own way

Use what you know about everyday tasks to expand what you can do. The RICOH MP C4504ex/MP C6004ex Color Multifunction Printer (MFP) offers a wide range of updated connectivity options, convenient apps, security tools and service support to simplify how you print, copy, scan and fax information. Use our Workstyle Innovation Technology to create digital workflows with intuitive fingertip control and be more productive. Download more apps and widgets and place them on the 10.1"-wide Smart Operation Panel as step-saving, one-touch shortcuts. Transform your MFP into an information portal by connecting to the cloud from your smartphone, tablet or other mobile device and use these powerful systems to print, share and discover the value of customized convenience. Share information electronically via advanced scanning and paperless faxing capabilities. Protect your work with more encryption and authentication tools. Best of all, faster, more responsive technical assistance can be only a swipe, scroll or tap away.*

- Print up to 45 or 60 color prints per minute
- Use tablet-like motions to navigate an interactive Smart Operation Panel
- Use encryption and authentication tools to help protect documents, data and devices
- Customize your own automated workflows to reduce manual tasks
- Download the Smart Device Connector app and use your personal mobile device to print and share information from the MFP — and use the same app to display information to Ricoh projectors and interactive whiteboards
- Showcase your work in brilliant colors with professional finishing
- Take advantage of eco-friendly features to lower operating costs and reduce overall environmental impact without sacrificing business productivity

*When enabled, internet connection required.





A new way to work is within your reach

Perform more tasks with fewer hassles

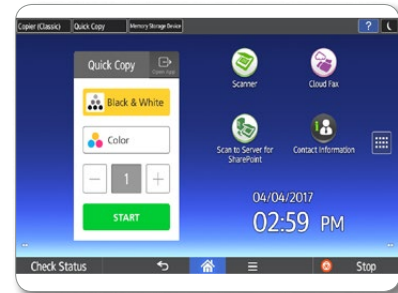
Use intuition to work smarter

Decisions are easier when you have the right information. With Workstyle Innovation Technology, you can use the same motions you use on your smartphone or tablet to access information instantly on the oversized 10.1"-wide Super VGA Smart Operation Panel (SOP). Download a wide range of apps and information-rich widgets from our Application Site. Check settings or initiate automated print, copy, scan and fax workflows with a single touch to reduce time-consuming manual tasks. For example, you can check the number of prints, change scan-to destinations, toggle between finishing options and more with a tap of your finger. With SOP Designer, you can have your Home Screen customized by our technicians with wallpaper designs, shortcut placements, corporate branding, rotating messages and more.



Customize workflows to simplify information flow

You have a lot of work to do. Who says you have to spend a lot of time doing it? Deploy workflow applications that streamline business via Ricoh Workstyle Innovation Technology. Do you routinely print the same types of spreadsheets? Do you scan and share notes after the weekly meeting? Integrate multiple processes and create unique digital workflows to simplify complex tasks. Place a workflow shortcut on the Home Page so you can simply press an icon and initiate tasks automatically with less replication, fewer steps and more accuracy. Tap the ID Card Copy icon to scan two-sided identity documents, such as licenses and insurance cards, onto a single-sided document. For more complex workflows, add your choice of Ricoh or third party software solutions to simplify your workday.



Make your mark from anywhere

With your smartphone or tablet in hand, productivity remains within your grasp. Download the RICOH Smart Device Connector app to connect to the MP C4504ex/MP C6004ex without software, utilities, drivers or delays. Simply touch your mobile device to the MFP's Near Field Communication (NFC) tag or scan a QR code from the control panel to print, scan and share documents, photos and more directly from your smartphone or tablet. Scan originals at the MFP and send them to your personal smart device or directly to cloud storage, so you can access and distribute them digitally at your convenience. You can also use the Smart Device Connector app to project information to Ricoh projectors and interactive whiteboards. Collaboration has never been easier.





Do it all with speed and convenience

Expedite every task, every day

Decisions have to be made. Ensure they're the right ones by getting information where it needs to be — on time. Print up to 45 or 60 pages per minute when producing full-color brochures, presentations and spreadsheets. Use standard PostScript and PDF Direct Print emulation to process your biggest jobs with ease. Add optional paper trays to extend paper capacity up to 4,700 sheets, and remove paper jams quickly via an animated guide. Scan full-color originals and deliver them at breakneck speeds with a host of scan-to capabilities, including access to your LDAP directory for email delivery. Send and receive paperless faxes to ensure contracts, forms and other important documents reach recipients easily.



Leave your mark with brilliant colors

Make an unforgettable impression by producing compelling images and documents with densely rich colors for more lifelike reproductions at up to 1200 dpi resolution. The MP C4504ex/MP C6004ex recalibrates itself as it processes files, which means colors never deteriorate and text and lines stay incredibly sharp page after page. Expand your reach by printing on a wider, thicker range of paper stocks — up to 12" x 18" sizes and 300 gsm/80 lb. Bond. You can even create posters and banners that would normally be reserved for wide-format devices by combining multiple pages into one image. Want to save on outsourcing costs? Choose the optional Fiery® E-23C Color Controller and produce spot color professional output using the gamut of RGB and CMYK colors.



Grab and share information automatically

Move information to the right people in the right format quickly. Access up to 3,000 frequently used documents stored in the embedded Document Server. With optional Optical Character Recognition (OCR), create keyword-searchable PDF files for easier retrieval from the Document Server at a later time. Use the built-in browser to capture files and images from the web. Ready to share with others? Scan originals at up to 180 ipm via the 220-Sheet Single Pass Document Feeder and use scan-to capabilities to send digital files to any recipient, anywhere. Or, use RICOH Device Software Manager to simplify print driver installation and begin using the device in moments.



Empower users to work quickly, collectively

Support extended uptime

You may not have all the answers, but now you'll know where to find them. The MP C4504ex/MP C6004ex includes a wide range of "smart support" capabilities that when enabled will help you resolve pressing issues and maintain productivity. Are you looking to avoid waiting for in-person technician visits? With RemoteConnect Support, our experienced technicians can identify and correct issues in real time by accessing your MFP remotely. Are you managing many devices? By using the Remote Panel Operation tool IT managers and network administrators can easily program, monitor and change settings for each device on their network. Use the Automatic Remote Firmware function to upgrade multiple devices independently. Use the convenient Web Help feature to find quick answers about the most common functions and operation of your MFP. Plus, the Ricoh Application Site offers self-help videos for basic MFP operations.



Hold yourself and others accountable

You're responsible for getting company information to the right people. So make certain the right people are sending it. Protect the device with user authentication — and track activity for every user, set print quotas, restrict access to specific functions and more. Each user logs in to the MP C4504ex/MP C6004ex by entering a passcode — or by passing an ID card over an optional card reader at the device. Protect documents with Locked Print. Users can release jobs for printing only when standing at the MFP, which helps protect confidential information. You can also use a watermark to track specific printed documents if unauthorized users try to recreate them. Find more data protection with encryption for transmitted information and automatic overwrites for latent data on the hard drive.



Plan to save

The MP C4504ex/MP C6004ex is designed specifically to simplify workloads while reducing environmental impact. Because the MFP meets EPEAT® Gold criteria* and ENERGY STAR® certifications, you can realize low Typical Electricity Consumption (TEC) rates — 1.8 kWh/week with the MP C4504ex. Use default duplex printing to reduce paper costs. Program the MFP to power down automatically when you know the office will be empty. And use the Eco-Friendly widget to encourage reduced paper consumption. The system is also equipped with an innovative motion sensor, which senses an approaching user by detecting the differences in body temperature versus the surrounding environment. The sensor lets you promptly begin inputting job settings by tapping the touchscreen to wake the MFP from Sleep Mode.



*EPEAT Gold rating is applicable only in the USA.

To view detailed features of our multifunction products online go to www.ricoh-usa.com/products

Perform more jobs with fewer hassles



- 1 Smart Operation Panel:** Choose from multiple intuitive user interfaces to customize and automate workflows on the 10.1"-wide Super VGA Smart Operation Panel. Create shortcut icons. Add convenient widgets. And access information with one-touch control using the same motions you use on your smartphone or tablet.
- 2 220-Sheet Single Pass Document Feeder (SPDF):** Feed color and black-and-white documents for high-speed copying and scanning in a single pass.
- 3 User authentication:** Monitor the activity for every MFP user with personal passcodes. Or, with embedded Quick Card authentication technology and an optional NFC card or HID card reader, you can require users to gain access via proximity card.
- 4 Paper Trays (Standard):** With two 550-Sheet Paper Trays, one of which can accommodate paper sizes up to 12" x 18", you can produce more jobs with fewer reloads.
- 5 100-Sheet Bypass Tray:** Accommodate a wider range of paper stocks — from envelopes to 12" x 49.6" banner sizes — to impress audiences with versatile output. Add an optional Banner Paper Guide Tray for convenient, affordable banner printing.
- 6 Document Server:** Create up to 200 shared or passcode-protected personal folders to store up to 3,000 frequently used digital documents on the MFP's hard drive.
- 7 Tandem Large Capacity Tray (Optional):** Extend runs for 8.5" x 11" paper sizes with two 1,000-Sheet Paper Trays.
- 8 1,500-Sheet Side Large Capacity Tray (Optional):** Minimize interruptions by adding up to an additional 1,500 sheets of letter-sized paper.
- 9 125-Sheet One-Bin Tray (Optional):** Separate output quickly for easier retrieval when printing multiple jobs.
- 10 2,000-Sheet External Booklet Finisher:** Produce up to 20-sheet saddle stitched booklets cost effectively. Available with an optional Hole Punch Unit.
- 11 Web Browser:** Use the built-in web browser on the MFP touch panel to search for web pages.
- 12 Motion Sensor:** Enables the panel to be ready for key input within one second of tapping the touchscreen to awaken the MFP from Sleep Mode.

Put it all together at the end

Bring your best ideas together by finishing them in style. With the External Hybrid Stapleless + Stapler Finisher, you can conserve resources by getting rid of staples entirely for document sets of 2 to 5 pages. For document sets from 6 to 50 pages, the finisher can automatically convert to staples. It is ideal for educational, manufacturing and healthcare environments.

You can choose other finishing options, too. Each is specifically designed to simplify paper handling, stacking and stapling, so you can concentrate on other core tasks. Choose the one that meets your unique requirements and give your projects an affordable, impressive professional-grade look.



Finisher	Paper Capacity (LT)	Hole-Punch	Saddle Stitch	Stapleless
SR3130 Internal	500 Sheets	Option	N/A	N/A
SR3210 External	1,000 Sheets	Option	N/A	Stapleless – Up to 5 Sheets Stapled – Up to 50 Sheets LTR
SR3220 External	1,000 Sheets	Option	Up to 15 Sheets	N/A
SR3240 External	2,000 Sheets	Option	Up to 20 Sheets	N/A
SR3230 External	3,000 Sheets	Option	N/A	N/A

*Not available for MP C6004ex

General Specifications

Printing Process	4-Drum Method
Output Speed (Copy/Print)	MP C4504ex: 45-ppm B&W & FC (LTR) MP C6004ex: 60-ppm B&W & FC (LTR)
Warm-Up Time	24 seconds
Recovery from Sleep Mode	MP C4504ex: 7.6 seconds MP C6004ex: 7.9 seconds
First Copy Time (FC/B&W)	MP C4504ex: 5.7/4.0 seconds MP C6004ex: 4.5/3.1 seconds
Copy Resolution	600 dpi
Quantity Indicator	Up to 999 copies
Single Pass Document Feeder (SPDF)	Original Capacity: 220 sheets Original Size: 5.5" x 8.5" – 11" x 17" (A5 – A3) Paper Weights: Simplex: 11 – 34 lb. Bond (40 – 128 g/m ²), Duplex: 14 – 34 lb. Bond (52 – 128 g/m ²)
Paper Capacity	Standard: 2 x 550 sheets + 100-Sheet Bypass Tray, Maximum: 4,700 sheets (w/Tandem LCT + Side LCT)
Supported Paper Sizes	1st Paper Tray: 8.5" x 11" (A4) 2nd Paper Tray: 5.5" x 8.5" – 12" x 18" (A6 – A3), Envelopes Bypass: Up to 12" x 18", Envelopes Custom Sizes: Width: 3.5" – 12.6" (90 – 320 mm), Length: 5.8" – 49.6" (148 – 1260 mm)
Supported Paper Weights	Standard Trays: 16 – 80 lb. Bond/166 lb. Index (60 – 300 g/m ²) Bypass Tray: 14 – 80 lb. Bond/166 lb. Index (52 – 300 g/m ²) Duplex Unit: 14 – 68 lb. Bond/142 lb. Index (52 – 256 g/m ²)
Paper Types	Plain, Recycled, Special Paper 1 – 3, Letterhead, Cardstock, Preprinted Paper, Bond Paper, High-Gloss Coated Paper, Color Paper, Envelopes, Coated, Labels* & OHP*
Auto Duplex	Standard
Output Capacity	Standard: 500 sheets Maximum: 3,625 sheets
Zoom	25% – 400% in 1% increments
Dimensions (WxDxH)	26.3" x 29.1" x 47.5" (668 x 738 x 1205 mm) (Includes SPDF and Two-Tray Paper Bank)

Weight	228 lbs. (103 kg)
Power Requirements	120V – 127V, 60Hz, 15A
Power Consumption	1,584W or less; Sleep Mode: 0.8W
TEC Value**	MP C4504ex: 1.8 kWh/week MP C6004ex: 2.8 kWh/Week
*Bypass Tray Only	
**Typical Electricity Consumption by ENERGY STAR Qualified Imaging Equipment Test Procedure	
Printer Specifications (Standard)	
CPU	Intel Atom Processor Bay Trail 1.75 GHz
Memory/HDD	2 GB RAM/320 GB HDD Standard & 4 GB RAM/320 GB HDD Option
Page Description Languages	Standard: PCL5c, PCL6, PostScript®3™ Emulation: PDF Direct Print Emulation Optional: Genuine Adobe® PostScript®3™, Adobe® PDF Direct Print, IPDS, PictBridge®
Font Support	Standard: PCL: 45 Roman fonts + 13 International fonts; PostScript®3™ Emulation: 80 Roman fonts + 13 International fonts Optional: Genuine Adobe® PostScript®3™: 136 Roman fonts; IPDS: 108 Roman fonts
Max. Print Resolution	1200 x 1200 dpi
Network Interfaces	Standard: 1000Base-T/100Base-TX/10Base-T Ethernet, USB2.0 Type A (3 Ports), SD Slot on Operation Panel Optional: IEEE1284/ECP; IEEE802.11a/b/g/n; USB2.0 Type B TCP/IP (IPv4, IPv6)
Network Protocol Support	Windows® Vista/7/8.1/10/Server 2008/Server 2008R2/Server 2012/Server 2012R2/Server 2016
Network/OS	Unix: Sun Solaris, HP-UX, SCO OpenServer, RedHat Linux, IBM AIX, Citrix XenDesktop 7.0/7.1, XenApp 6.5/7.5, Mac OS X v.10.9 or later SAP R/3, SAP S/4, IBM iSeries AS/400-using OS/400 Host Print Transform
Utilities	Device Manager NX, Web Image Monitor, @Remote

Document Server Specifications (Standard)

Max. Stored Documents	3,000
Max. Pages/Document	2,000
Max. Page Capacity	9,000
Max. Number of Folders	200

Scanner Specifications (Standard)

Scanner Resolution	B&W and Full-Color scanning at 100 – 600 dpi, Up to 1200 dpi for TWAIN scanning
Scanning Speed (B&W & Full-Color LTR)	200/300 dpi: 110 ipm Simplex/180 ipm Duplex
Scan Area	11.7" x 17" (297 mm – 432 mm)
Compression Method	B&W TIFF: MH, MR, MMR, JBIG2 Full-Color: JPEG
Supported File Formats	Single/Multi-Page TIFF, PDF, High Compression PDF & PDF/A, Single Page JPEG
Scan Modes	Scan-to-Email (with LDAP support) Scan-to-Folder (SMB/FTP) Scan-to-URL Scan-to-Media (USB/SD Card) Network TWAIN Scanning

Facsimile Specifications (Optional)

Type	ITU-T (CCITT) G3
Circuit	PSTN, PBX
Resolution	200 x 100 dpi, 200 x 200 dpi, 400 x 400 dpi (with optional SAF memory)
Modem Speed	33.6K – 2,400 bps w/Auto Fallback
Compression Method	MH, MR, MMR, JBIG
Transmission Speed	G3: Approximately 2 seconds/page (JBIG)
Scanning Speed	Up to 81 spm
Auto Dialing	2,000 Quick/Speed Dial numbers; 100 Group Dial numbers
Memory Capacity (SAF)	Standard: 4 MB (approx. 320 pages), Optional: 64 MB (approx. 4,800 pages) with optional SAF memory

Security Features (Standard)

DataOverwriteSecurity System (DOSS), HDD Encryption, User Codes, SNMP v3 Support, Encryption, Locked Print, User Authentication, 802.1x Wired Authentication, Quota Setting/Account Limit, Digitally Signed PDF, and more

RICOH MP C4504ex/MP C6004ex

SYSTEM SPECIFICATIONS



Hardware Accessories

Paper Handling Options

Two-Tray Paper Bank (PB3240)¹

Tray Capacity	1,100 sheets (550 sheets x 2 trays)
Paper Size	5.5" x 8.5" to 12" x 18" (A5 – A3)
Paper Weight	16 – 80 lb. Bond/166 lb. Index (60 – 300 g/m ²)
Dimensions (WxDxH)	23.1" x 27" x 9.7" (587 x 685 x 247 mm)

One-Tray Paper Bank (PB3250)¹

Tray Capacity	550 sheets x 1 tray
Paper Size	5.5" x 8.5" to 12" x 18" (A5 – A3)
Paper Weight	16 – 80 lb. Bond/166 lb. Index (60 – 300 g/m ²)
Dimensions (WxDxH)	23.1" x 27" x 4.7" (587 x 685 x 120 mm)

Requires installation of Caster Table Type M3

Tandem Large Capacity Tray (PB3260)¹

Tray Capacity	2,000 sheets (1,000 sheets x 2)
Paper Size	8.5" x 11" (A4)
Paper Weight	16 – 80 lb. Bond/166 lb. Index (60 – 300 g/m ²)
Dimensions (WxDxH)	23.1" x 27" x 9.7" (587 x 685 x 247 mm)

Side Large Capacity Tray (RT3030)

Tray Capacity	1,500 sheets
Paper Size	8.5" x 11" (A4)
Paper Weight	16 – 80 lb. Bond/166 lb. Index (60 – 300 g/m ²)
Dimensions (WxDxH)	13.4" x 21.4" x 11.4" (340 x 545 x 290 mm)

Requires installation of Two-Tray Paper Bank (PB3240) or Tandem LCT (PB3260)

Output Trays & Finisher Options

Internal Shift-Sort Tray (SH3070)¹

Tray Capacity	250 sheets (8.5" x 11" or smaller) (A4 – A5) 125 sheets (8.5" x 14" or larger) (B4 – A3)
Paper Size	5.5" x 8.5" to 12" x 18" (A5 – A3)
Paper Weight	14 – 80 lb. Bond/166 lb. Index (52 – 300 g/m ²)

Cannot be installed with any Finisher

One-Bin Tray (BN3110)

Paper Size	5.5" x 8.5" to 12.6" x 17.7" (A5 – A3)
Paper Weight	14 – 80 lb. Bond/166 lb. Index (52 – 300 g/m ²)
Tray Capacity	125 sheets

500-Sheet Internal Finisher (SR3130)¹

Paper Size	5.5" x 8.5" to 12" x 18" (A6 – A3)
Paper Weight	14 – 80 lb. Bond/166 lb. Index (52 – 300 g/m ²)
Stack Capacity	500 sheets (8.5" x 11" or smaller) (A4) 250 sheets (8.5" x 14" or larger) (B4 – A3)

Staple Paper Size	7.25" x 10.5" to 11" x 17" (A4 – A3)
Staple Paper Weight	14 – 28 lb. Bond (52 – 105 g/m ²)
Staple Capacity	50 sheets (8.5" x 11") (A4) 30 sheets (8.5" x 14" or larger, and/or Mixed Sizes) (B4 – A3)

Staple Positions	Top, Bottom, 2 Staples
Dimensions (WxDxH)	21.5" x 20.6" x 6.7" (546 x 523 x 170 mm)

*Not available for MP C6004ex.

2-/3-Hole Punch Unit (PU3040NA)

(Optional; Installs inside SR3130 Internal Finisher)	
Punch Paper Sizes	7.25" x 10.5" to 11" x 17" (A4 – A3)
Punch Paper Weight	14 – 45 lb. Bond/93 lb. Index (52 – 169 g/m ²)

1,000-Sheet Hybrid Staple + Stapleless Finisher (SR3210)¹**

Paper Size	Proof Tray: 5.5" x 8.5" to 12" x 18" (A6 – A3) Shift Tray: 5.5" x 8.5" to 12" x 18" (A6 – A3)
Paper Weight	Proof Tray: 14 – 45 lb. Bond/93 lb. Index (52 – 169 g/m ²) Shift Tray: 14 – 80 lb. Bond/166 lb. Index (52 – 300 g/m ²)

Stack Capacity	Proof Tray: 250 sheets (8.5" x 11") (A4); 50 sheets (8.5" x 14" or larger) (B4) Shift Tray: 1,000 sheets (8.5" x 11") (A4); 500 sheets (8.5" x 14" or larger) (B4)
----------------	---

Stapleless Capacity	2 – 5 sheets/set
Staple Capacity	50 sheets (8.5" x 11") (A4) 30 sheets (8.5" x 14" or larger) (B4)

Staple Paper Size	8.5" x 11" to 12" x 18" (A4 – A3)
Staple Paper Weight	14 – 28 lb. Bond (52 – 105 g/m ²)
Staple Positions	Top, Bottom, 2 Staples
Dimensions (WxDxH)	22.2" x 24.4" x 37.8" (563 x 620 x 960 mm)

1,000-Sheet Booklet Finisher (SR3220) ¹ **	
Paper Size	Proof Tray: 5.5" x 8.5" to 12" x 18" (A6 – A3) Shift Tray: 5.5" x 8.5" to 12" x 18" (A6 – A3)

Paper Weight	Booklet Tray: 8.5" x 11" to 12" x 18" (A4 – A3) Proof Tray: 14 – 45 lb. Bond (52 – 169 g/m ²) Shift Tray: 14 – 80 lb. Bond/166 lb. Index (52 – 300 g/m ²)
--------------	---

Stack Capacity	Booklet Tray: 14 – 28 lb. Bond (52 – 105 g/m ²) Proof Tray: 250 sheets (8.5" x 11" or smaller) (A4); 50 sheets (8.5" x 14" or larger) (B4 – A3) Shift Tray: 1,000 sheets (8.5" x 11" or smaller) (A4); 500 sheets (8.5" x 14" or larger) (B4 – A3)
----------------	--

Staple Capacity	Booklet Tray: 20 Sets (2 – 5 sheets), 10 Sets (6 – 10 sheets) & 7 Sets (11 – 15 sheets)
-----------------	--

Saddle Stitch	Normal Staple: 50 sheets (8.5" x 11") (A4); 30 sheets (8.5" x 14" or larger) (B4 – A3)
---------------	---

Staple Paper Size	Normal Staple: 8.5" x 11" to 12" x 18" (A4 – A3) Saddle Stitch: 8.5" x 11" to 12" x 18" (A4 – A3)
-------------------	--

Staple Paper Weight	14 – 28 lb. Bond (52 – 105 g/m ²)
Staple Positions	Top, Bottom, 2 Staples, Booklet
Dimensions (WxDxH)	22.2" x 24.4" x 37.8" (563 x 620 x 960 mm)

2-/3-Hole Punch Unit (PU3050NA)	
(Optional; Installs inside SR3210 or SR3220 Finisher)	
Punch Paper Sizes	5.5" x 8.5" to 11" x 17" (A5 – A3)
Punch Paper Weight	14 – 68 lb. Bond/142 lb. Index (52 – 256 g/m ²)

2,000-Sheet Booklet Finisher (SR3240) ¹ **	
Paper Size	Proof Tray: 5.5" x 8.5" to 12" x 18" (A6 – A3) Shift Tray: 5.5" x 8.5" to 12" x 18" (A6 – A3)

Paper Weight	Booklet Tray: 8.5" x 11" to 12" x 18" (A4 – A3) Proof Tray: 14 – 58 lb. Bond/122 lb. Index (52 – 220 g/m ²) Shift Tray: 14 – 80 lb. Bond/166 lb. Index (52 – 300 g/m ²)
--------------	---

Stack Capacity	Booklet Tray: 17 – 28 lb. Bond (64 – 105 g/m ²) Proof Tray: 250 sheets (8.5" x 11" or smaller) (A4) 50 sheets (8.5" x 14" or larger) (B4) Shift Tray: 2,000 sheets (8.5" x 11" or smaller) (A4)
----------------	--

Staple Capacity	1,000 sheets (8.5" x 14" or larger) (B4) Booklet Tray: 30 sets (2 – 5 sheets) or 15 sets (6 – 10 sheets) or 10 sets (11 – 15 sheets) or 6 sets (16 – 20 sheets)
-----------------	--

Staple Paper Size	Normal Staple: 50 sheets (8.5" x 11" to 11" x 17" and Mixed Sizes) (A4 – A3)
-------------------	--

Staple Paper Weight	Saddle Stitch: 20 sheets
---------------------	--------------------------

Staple Positions	Normal Staple: 8.5" x 11" to 11" x 17" (A4 – A3)
Dimensions (WxDxH)	Saddle Stitch: 8.5" x 11" to 12" x 18" (A4 – A3)

Staple Paper Weight	14 – 28 lb. Bond (52 – 105 g/m ²)
Staple Positions	Top, Bottom, 2 Staples, Top Slant, Booklet
Dimensions (WxDxH)	25.9" x 24.1" x 37.8" (657 x 613 x 960 mm)

3,000-Sheet Finisher (SR3230) ¹ **	
Paper Size	Proof Tray: 5.5" x 8.5" to 12" x 18" (A6 – A3) Shift Tray: 5.5" x 8.5" to 12" x 18" (A6 – A3)

Paper Weight	Proof Tray: 14 – 58 lb. Bond/122 lb. Index (52 – 220 g/m ²)
--------------	---

Stack Capacity	Shift Tray: 14 – 80 lb. Bond/166 lb. Index (52 – 300 g/m ²) Proof Tray: 250 sheets (8.5" x 11" or smaller) (A4)
----------------	--

Staple Capacity	50 sheets (8.5" x 14" or larger) (B4) Shift Tray: 3,000 sheets (8.5" x 11") (A4) 1,500 sheets (8.5" x 14" or larger) (B4)
-----------------	---

Staple Paper Size	50 sheets (8.5" x 11" to 11" x 17") or Mixed Sizes (A4 – A3)
-------------------	--

Staple Paper Weight	8.5" x 11" to 11" x 17" (A4 – A3)
Staple Positions	14 – 28 lb. Bond (52 – 105 g/m ²)
Dimensions (WxDxH)	Top, Bottom, 2 Staples, Top Slant

2-/3-Hole Punch Unit (PU3060NA)	
(Optional; Installs inside SR3230 or SR3240 Finishers)	
Punch Paper Sizes	5.5" x 8.5" to 11" x 17" (A5 – A3)
Punch Paper Weight	14 – 68 lb. Bond/142 lb. Index (52 – 256 g/m ²)

Color Controller E-23C	
Controller Type	Embedded Type
Fiery Platform	FS150
CPU	Intel Processor G850 2.9GHz
Host Interface	1000Base-T/100Base-TX/10Base-T
Memory	2 GB
Internal HDD	500 GB
Operating System	Linux
Network Protocol	TCP/IP (IPv4/IPv6), SMB, Bonjour
Page Description Language	Standard: PostScript ³ ™ & PCL6/5c

Max. Print Resolution	Up to 1200 dpi (2 bit)
Max. Scan Resolution	Up to 600 dpi
Fonts	PS3: 138 fonts/PCL: 81 AGFA fonts
Utilities	Standard: Command WorkStation ⁵ , Fiery [®] Scan, Printer Delete Utility, Fiery Web Tools, Fiery Bridge, Secure Erase and Fiery VUE

Color Management Tools	Optional: Fiery Impose, Fiery Compose, Fiery Auto Trap, EFI Spot-On [™] , Fiery Hot Folders, Fiery Color Profiler Suite v4.0, Fiery ES-2000 Spectrophotometer and EFI Productivity Pack
------------------------	--

Color Management Tools	ICC Profile, Color Chart, CMYK Color Reference Pages, RGB Color Tests, Trapping Support and ColorWise [®] Pro Tools
------------------------	--

Additional Accessories	
Banner Paper Guide Tray Type M19, Caster Table Type M3, Bridge Unit BU3070, Cabinet Type F, Camera Direct Print Card Type M19, Card Reader Bracket Type 3352, Extended USB Board Type M19, External Keyboard Bracket Type M19, Fax Connection Unit Type M20, Fax Memory Unit Type M19 64MB, File Format Converter Type M19, G3 Interface Unit Type M20, HotSpot MFP Option Type S, IEEE 802.11a/g/n Interface Unit Type M19, IEEE 1284 Interface Board Type M19, Imageable Area Extension Unit Type M19, IPDS Unit Type M20, Key Counter Bracket Type M3, Memory Unit Type M19 4GB, NFC Card Reader Type M19, OCR Unit Type M13, Optional Counter Interface Unit Type M12, Postscript3 Unit Type M33, Power Filter ESP XG-PCS-15D, Smart Card Reader Built-in Unit Type M19, XPS Direct Print Option Type M19	

Color Management Tools	ICC Profile, Color Chart, CMYK Color Reference Pages, RGB Color Tests, Trapping Support and ColorWise [®] Pro Tools
------------------------	--

Additional Accessories	
Banner Paper Guide Tray Type M19, Caster Table Type M3, Bridge Unit BU3070, Cabinet Type F, Camera Direct Print Card Type M19, Card Reader Bracket Type 3352, Extended USB Board Type M19, External Keyboard Bracket Type M19, Fax Connection Unit Type M20, Fax Memory Unit Type M19 64MB, File Format Converter Type M19, G3 Interface Unit Type M20, HotSpot MFP Option Type S, IEEE 802.11a/g/n Interface Unit Type M19, IEEE 1284 Interface Board Type M19, Imageable Area Extension Unit Type M19, IPDS Unit Type M20, Key Counter Bracket Type M3, Memory Unit Type M19 4GB, NFC Card Reader Type M19, OCR Unit Type M13, Optional Counter Interface Unit Type M12, Postscript3 Unit Type M33, Power Filter ESP XG-PCS-15D, Smart Card Reader Built-in Unit Type M19, XPS Direct Print Option Type M19	

Color Management Tools	ICC Profile, Color Chart, CMYK Color Reference Pages, RGB Color Tests, Trapping Support and ColorWise [®] Pro Tools
------------------------	--

Additional Accessories	
Banner Paper Guide Tray Type M19, Caster Table Type M3, Bridge Unit BU3070, Cabinet Type F, Camera Direct Print Card Type M19, Card Reader Bracket Type 3352, Extended USB Board Type M19, External Keyboard Bracket Type M19, Fax Connection Unit Type M20, Fax Memory Unit Type M19 64MB, File Format Converter Type M19, G3 Interface Unit Type M20, HotSpot MFP Option Type S, IEEE 802.11a/g/n Interface Unit Type M19, IEEE 1284 Interface Board Type M19, Imageable Area Extension Unit Type M19, IPDS Unit Type M20, Key Counter Bracket Type M3, Memory Unit Type M19 4GB, NFC Card Reader Type M19, OCR Unit Type M13, Optional Counter Interface Unit Type M12, Postscript3 Unit Type M33, Power Filter ESP XG-PCS-15D, Smart Card Reader Built-in Unit Type M19, XPS Direct Print Option Type M19	

Color Management Tools	ICC Profile, Color Chart, CMYK Color Reference Pages, RGB Color Tests, Trapping Support and ColorWise [®] Pro Tools
------------------------	--

Additional Accessories	
Banner Paper Guide Tray Type M19, Caster Table Type M3, Bridge Unit BU3070, Cabinet Type F, Camera Direct Print Card Type M19, Card Reader Bracket Type 3352, Extended USB Board Type M19, External Keyboard Bracket Type M19, Fax Connection Unit Type M20, Fax Memory Unit Type M19 64MB, File Format Converter Type M19, G3 Interface Unit Type M20, HotSpot MFP Option Type S, IEEE 802.11a/g/n Interface Unit Type M19, IEEE 1284 Interface Board Type M19, Imageable Area Extension Unit Type M19, IPDS Unit Type M20, Key Counter Bracket Type M3, Memory Unit Type M19 4GB, NFC Card Reader Type M19, OCR Unit Type M13, Optional Counter Interface Unit Type M12, Postscript3 Unit Type M33, Power Filter ESP XG-PCS-15D, Smart Card Reader Built-in Unit Type M19, XPS Direct Print Option Type M19	

Color Management Tools	ICC Profile, Color Chart, CMYK Color Reference Pages, RGB Color Tests, Trapping Support and ColorWise [®] Pro Tools
------------------------	--

Additional Accessories	
Banner Paper Guide Tray Type M19, Caster Table Type M3, Bridge Unit BU3070, Cabinet Type F, Camera Direct Print Card Type M19, Card Reader Bracket Type 3352, Extended USB Board Type M19, External Keyboard Bracket Type M19, Fax Connection Unit Type M20, Fax Memory Unit Type M19 64MB, File Format Converter Type M19, G3 Interface Unit Type M20, HotSpot MFP Option Type S, IEEE 802.11a/g/n Interface Unit Type M19, IEEE 1284 Interface Board Type M19, Imageable Area Extension Unit Type M19, IPDS Unit Type M20, Key Counter Bracket Type M3, Memory Unit Type M19 4GB, NFC Card Reader Type M19, OCR Unit Type M13, Optional Counter Interface Unit Type M12, Postscript3 Unit Type M33, Power Filter ESP XG-PCS-15D, Smart Card Reader Built-in Unit Type M19, XPS Direct Print Option Type M19	

Color Management Tools	ICC Profile, Color Chart, CMYK Color Reference Pages, RGB Color Tests, Trapping Support and ColorWise [®] Pro Tools
------------------------	--



www.ricoh-usa.com

Ricoh USA, Inc., 70 Valley Stream Parkway, Malvern, PA 19355, 1-800-63-RICOH
 ©2017, Ricoh USA, Inc. All rights reserved. Ricoh[®] and the Ricoh logo are registered trademarks of Ricoh Company, Ltd. All other trademarks are the property of their respective owners. The content of this document, and the appearance, features and specifications of Ricoh products and services are subject to change from time to time without notice. Products are shown with optional features. While care has been taken to ensure the accuracy of this information, Ricoh makes no representation or warranties about the accuracy, completeness or adequacy of the information contained herein, and shall not be liable for any errors or omissions in these materials. Actual results will vary depending upon use of the products and services, and the conditions and factors affecting performance. The only warranties for Ricoh products and services are as set forth in the express warranty statements accompanying them.