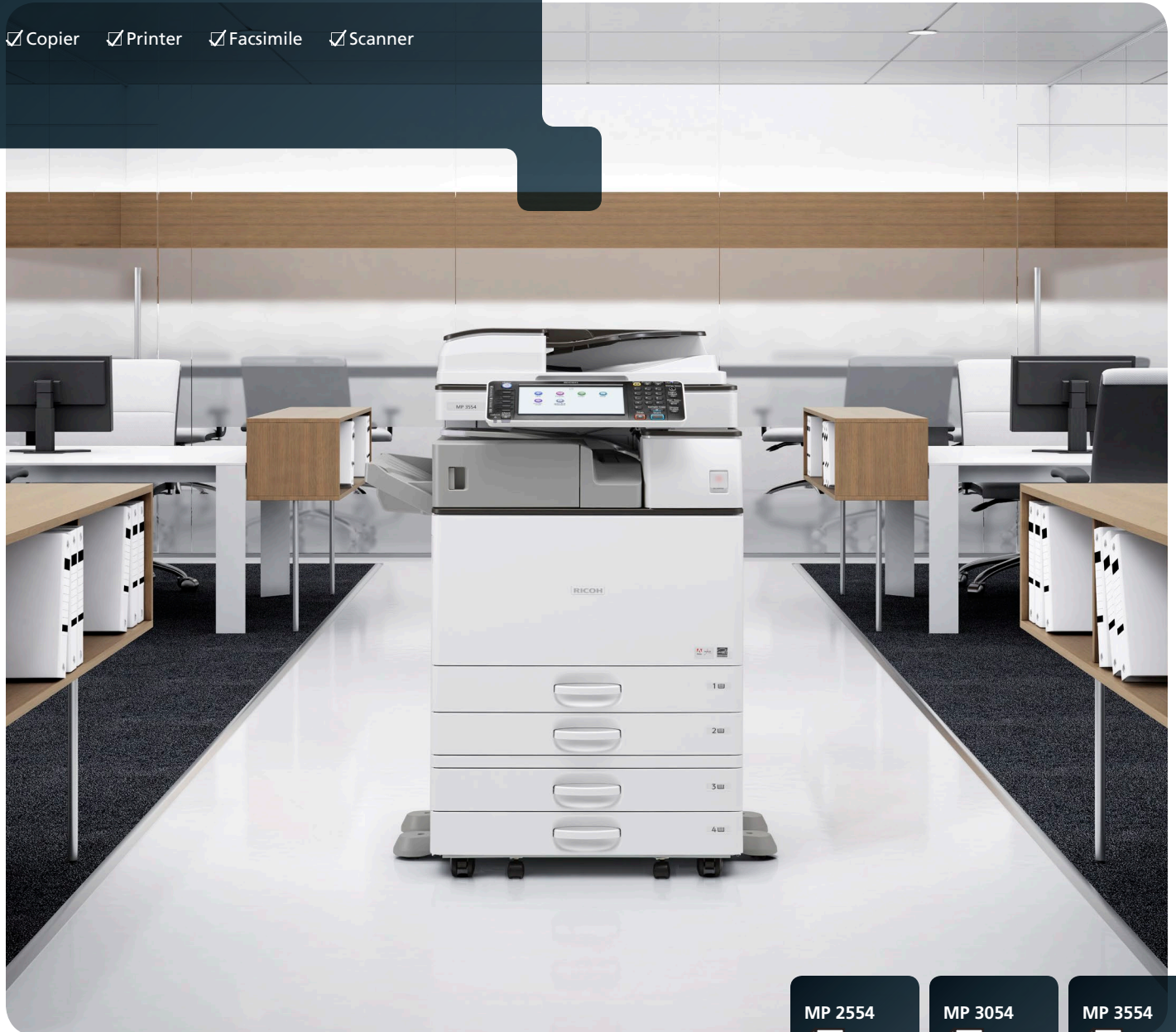


Multifunction B&W

RICOH MP 2554/MP 3054/ MP 3554

Copier Printer Facsimile Scanner



RICOH
imagine. change.

MP 2554

25
ppm monochrome

MP 3054

30
ppm monochrome

MP 3554

35
ppm monochrome

Expand your business with customized convenience

Who says staying ahead of the competition is difficult? It's easy when you can give your customers the information they need — in multiple formats and multiple ways — quickly, with a host of standard security features. Perform everyday office tasks, including advanced printing, scanning, copying and faxing, from the versatile RICOH® MP 2554/MP 3054/MP 3554. Are projects piling up? Save time with preset shortcuts to frequently used document tasks. You use your smartphone every day. Why not use it to print documents from wherever you are? You can even monitor user activity and energy consumption remotely, and make strategic changes to simplify work and reduce costs.

- Produce up to 35 black-and-white prints/copies per minute
- Mobile printing for exceptional on-the-go performance
- Simplify workflow and perform more tasks without increasing footprint size
- Complete more types of jobs with flexible media handling
- Minimize operating costs with energy-saving features

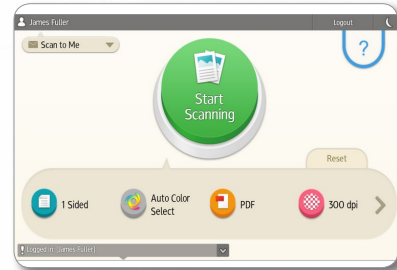


Move from job to job effortlessly

Fully featured with advanced tools to make your workday easier

Perform more types of tasks

Information drives business. You rely on it to make smarter decisions. But what happens when you need to share it with others? How quickly can you get it to them? And is it in the format — either paper or digital — that they prefer? Whether you're printing, copying, scanning or faxing, the compact and affordable Ricoh MP 2554/MP 3054/MP 3554 helps you produce and share information quickly. Take advantage of intuitive one-touch controls, and move on to the next task — whatever it turns out to be — with ease.



Share information faster

Take too much time on one job, and the next one may not get done. Fortunately, you can easily transition between jobs with the Ricoh MP 2554/MP 3054/MP 3554. Recovery time from sleep mode is less than 5 seconds, so you don't have to stand around waiting when you need to send documents quickly. Print up to 35 black-and-white pages per minute on a wide range of media and handle almost any job. You can also scan up to 79 color or black-and-white images per minute with minimal manual intervention using the standard 100-Sheet Automatic Reversing Document Feeder (ARDF).



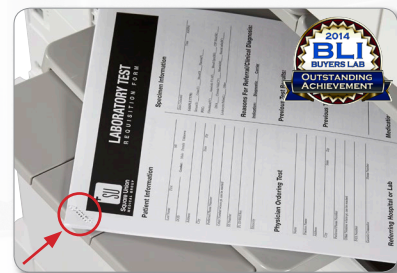
Work from any location

Access information from wherever you are and share it with others using the Ricoh MP 2554/MP 3054/MP 3554. The user-friendly MFP integrates with optional Ricoh HotSpot Enterprise™, so you can print directly to the MFP from your mobile device without compromising speed or security. You can also leverage the powerful features and functionality of the Ricoh MP 2554/MP 3054/MP 3554 directly from your smartphone or tablet through the Ricoh Smart Device Connector app. This versatile technology helps you easily connect an NFC-enabled Smart Device to the optional Smart Operation Panel. Users simply touch their Smart Device to the NFC tag on the Smart Operation Panel or scan the QR Code to automatically connect to the MFP allowing copy, print, scan and fax capability directly from their Smart Device.



Access everything you need with ease

Perform daily tasks more efficiently with the intuitive, simple-to-use interface. Spending too much time re-loading paper? Add optional paper trays to increase paper capacity up to 4,700 sheets for longer, uninterrupted runs. You can even print on thicker stocks up to 11" x 17" without missing a beat. Plus, you can choose from several automated finishers, including a Stapleless Finisher, which received the Summer 2014 BLI Outstanding Achievement Award for Innovation. This 250-Sheet Internal Stapleless Finisher binds up to five sheets of paper with no staples. This unique stapleless finishing technology helps to lower supply costs and expedites future paper recycling and/or shredding needs.

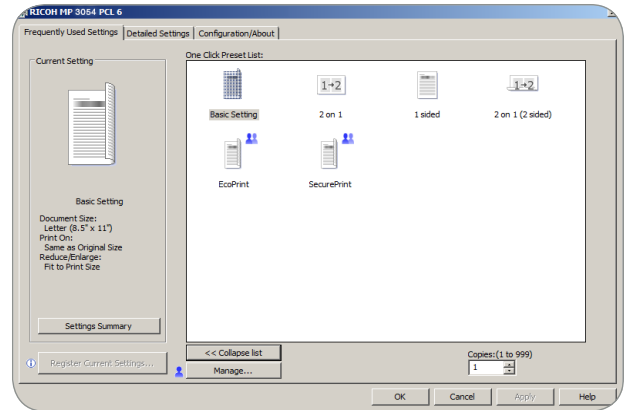




Keep productivity high in any network environment

Manage and boost workgroup output

Today's fast paced offices need to work more efficiently. Your workgroup can use the Ricoh MP 2554/MP 3054/MP 3554 — featuring a powerful 533 MHz processor, 2 GB RAM and a 320 GB HDD — to run multiple jobs from multiple users simultaneously, without interruption. You can set quotas or limit output for specific users to encourage faster, more responsible printing. Take advantage of the icon-driven, one-click preset PCL6 user interface to print crisp output up to 1200 dpi in fewer steps.



Customize workflows to simplify how you work

You know what you need to work faster. So why not customize the Ricoh MP 2554/MP 3054/MP 3554 to meet your specific needs? Personalize the Home Screen with icons to access frequently used tasks with a single touch. Use software like optional GlobalScan™ NX to transform paper documents into digital form for faster delivery to more people in more places. Add other third-party vendor solutions to simplify content management and other business-critical tasks so you can work with fewer manual touchpoints and minimize errors.



Use familiar technology to navigate key functions quickly

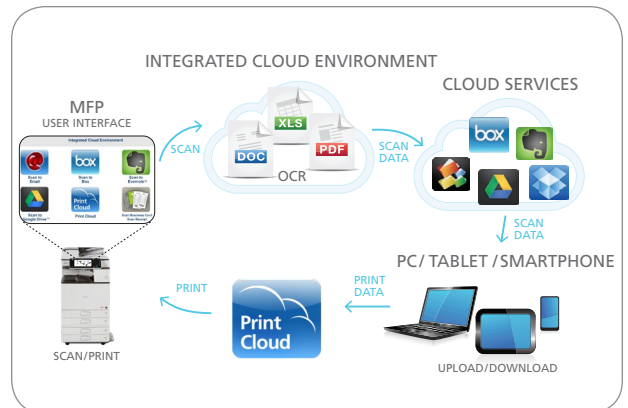
How quickly can you check a text or send an email? With the Ricoh MP 2554/MP 3054/MP 3554, you can print, copy, scan and fax documents and move on to your next project just as quickly. Intuitive drag-and-drop, pinch-and-flick and swipe scrolling simplify routine actions and minimize extraneous choices. It's available via the optional 10.1" Wide Super VGA Smart Operation Panel, which simplifies the choices for the most frequently used functions for Copy, Scanner, and Fax. Do you have users who prefer Ricoh's traditional interface? For workgroups requiring enhanced feature functionality, it is easy to switch between the Quick User Interface functions and Ricoh's traditional user interface.



We've made it easy to take control

Use automation to save time

Work is a lot harder when you don't have the right information. Or, when you're spending too much time searching for vital information. Ricoh continues to automate how you capture, retrieve and send data to simplify everyday tasks. With optional embedded OCR scanning, users can create searchable and editable PDF files for advanced indexing and retrieval of their scanned documents. With the optional Ricoh Integrated Cloud Environment (ICE) solution, you can access and manage information from any location via Cloud services for incredible convenience without expensive servers, equipment and maintenance.



Scan and share the way you want to

Reduce the amount of paper your organization uses — and share information faster and more economically. Because digital documents can be shared in real time, you can work with others to develop strategies and ideas that can be implemented quickly. Whether images are in black-and-white or color, or in PDF, TIFF or JPEG formats, you can get them to the right place via Scan-to-File/Folder/URL/FTP/Email. Compress the size of highly complex, graphics-intensive files and send them just as easily without compromising quality. You can also make scanning easier across your organization with Distributed Scan Management (DSM). Use it to automate document tasks and to set user permissions, rules and delivery preferences to simplify how you manage information.



Send faxes more ways, more places

Manage fax workflow quickly and conveniently by adding optional faxing capabilities. Choose the method that works best for you, whether it's Internet Faxing, LAN faxing or over IP for faster delivery via Super G3 faxing. Using another connected device that doesn't have a fax board? No problem. With the Remote Fax Option, users can send and receive fax documents from any connected device in your fleet — even those without fax options — by sending it through the Ricoh MP 2554/MP 3054/MP 3554. This minimizes the need for additional phone lines and fax boards.





Help meet today's business challenges with smart, secure multifunction performance

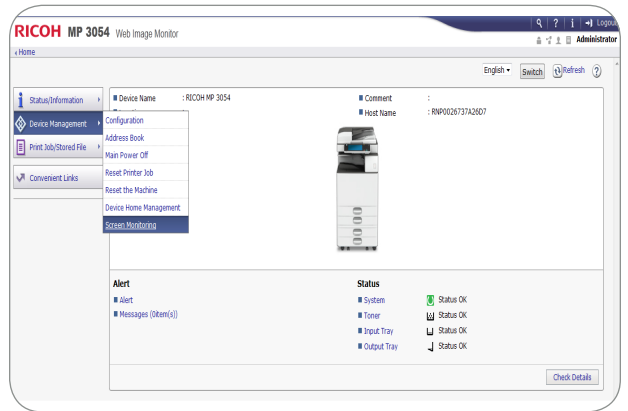
Protect your documents, and yourself

Every business takes risks daily. Some of them are avoidable. Advanced user authentication helps prevent unauthorized access to documents. Documents are stored at the device until an authorized ID card is swiped using the optional card reader or a passcode is entered at the MFP to release them. For added protection, you can use encrypted PDF transmission to scramble data on confidential PDFs or add watermarks to confidential documents that will appear when unauthorized users attempt to copy them. The DataOverwriteSecurity System (DOSS) automatically overwrites latent images and data on the hard drive to render them unreadable.



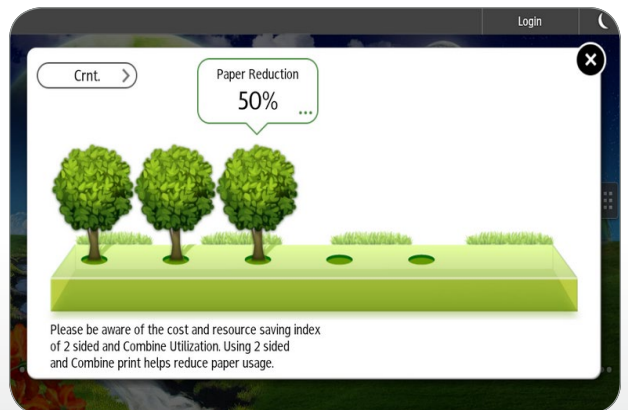
Manage and monitor remotely

With the Ricoh MP 2554/MP 3054/MP 3554, you can see how terms like "efficiency" and "productivity" fit into your workday. Use the intuitive administration controls to automate meter reads, access system settings, streamline firmware updates and more, right from the desktop. Get alerts when supplies are low or maintenance is needed. Monitor usage for specific users or workgroups. And, configure your entire fleet remotely from the easy-to-use, Web browser-based operation panel.



Minimize energy consumption and operating costs

You wouldn't accept an MFP that stopped being productive once you began using it, so why settle for one that stops being affordable? Choose the Ricoh MP 2554/MP 3054/MP 3554 for low cost-per-page and best in class typical electricity consumption (TEC) values to help support your budgetary needs and sustainability goals. With a shorter print/copy time from sleep mode, the Ricoh MP 2554/MP 3054/MP 3554 keeps up with today's fast-paced business requirements. You can program the device to power on or off during specified times to conserve energy for even greater savings. Plus, the device meets EPEAT® Gold criteria — a global environmental rating system for electronic products — and is certified with the latest ENERGY STAR™ specifications.



Eco-Friendly Indicator Screen as shown on the Smart Operation Panel.

Streamline document management tasks in small offices and workgroups



Ricoh MP 2554 shown with optional BN3110 One-Bin Tray, PB3220 Paper Feed Unit, RT3030 1,500-Sheet Side Large Capacity Tray, Bridge Unit BU3070 and 1,000-Sheet SR3150 Booklet Finisher.

- 1 Navigate from job to job easily via the standard, full-color, 9" tiltable LCD control panel featuring a USB/SD card slot and a customizable home screen to link to commonly performed jobs
- 2 Use the standard 100-Sheet Automatic Reversing Document Feeder (ARDF) to efficiently handle one- and two-sided originals for copying, scanning and faxing
- 3 The MP 2554/MP 3054/MP 3554 comes standard with 2 x 550-sheet paper trays for longer, uninterrupted runs
- 4 A standard 100-Sheet Bypass Tray accommodates a wide range of paper sizes and types, including poster printing
- 5 Use the optional 2 x 550-Sheet Paper Trays (shown) for multiple paper sources on demand. Other options include a 1 x 550-Sheet Paper Tray, 2,000-Sheet Tandem Large Capacity Tray, 1,500-Sheet Side Large Capacity Tray (shown) and Type F Cabinet
- 6 Produce professional documents and minimize outsourcing. The optional 1,000-Sheet Booklet Finisher (shown) provides three destinations for output, and can be used to produce paginated, saddle-stitched, punched and folded booklets. Design your own complete document production solution with other optional finishers including a 1,000-Sheet Finisher, 500-Sheet Internal Finisher and 250-Sheet Stapleless Finisher
- 7 The optional 125-Sheet One-Bin Tray (shown) and 250-Sheet Internal Shift-Sort Tray can separate output and simplify document retrieval

Ricoh MP 2554/MP 3054/MP 3554

SYSTEM SPECIFICATIONS

Engine/Copier Specifications

Scanning Element	One-Dimensional Solid Scanning Through CCD
Printing Process	Single Laser Beam Scanning & Electrophotographic Printing
Toner Type	Dry, dual component
Copy Resolution	600 x 600 dpi
Maximum Copy Quantity	Up to 999
First Page Out Time	4.6 Seconds for MP 2554/MP 3054 4.3 Seconds for MP 3554
Warm-Up Time	14 seconds with Standard Operation Panel
Recovery From Sleep Mode	4.7 seconds
Memory (Standard/Maximum)	2 GB RAM + 320 GB HDD (Shared)
Original Type	Book/Sheet/Object
Maximum Original Size	Up to 11" x 17"
B&W Print Speed (Letter/A4)	MP 2554: 25 prints/minute MP 3054: 30 prints/minute MP 3554: 35 prints/minute
Power Source	120V/60Hz/12A
Typical Electricity Consumption (TEC)**	MP 2554: 0.9 kWh/week MP 3054: 1.1 kWh/week MP 3554: 1.4 kWh/week
Standard Paper Capacity	1,200 sheets (50 sheets x 2 trays, and 100-Sheet Bypass Tray)
Maximum Paper Capacity	4,700 sheets (w/Tandem LCT + Side LCT)
Supported Paper Types	Plain Paper, Transparencies*, Letterhead, Color Paper, Pre-Punched Paper, Labels*, Envelopes, Cardstock, Recycled
Supported Paper Sizes (A6 - A3)	Bypass Tray: 5.5" x 8.5" - 12" x 18" (A6 - A3) Tray 1 & 2: 5.5" x 8.5" - 11" x 17" (A5 - A3)
Supported Paper Weights	Duplex: 14 - 68 lb. Bond (52 - 256 g/m ²) Bypass: 14 - 80 lb. Bond (52 - 300 g/m ²) Tray 1 & 2: 16 - 80 lb. Bond (60 - 300 g/m ²)
Standard Output Capacity	500 sheets
Maximum Output Capacity	1,625 sheets (Bridge Unit + 1 Bin + 1,000-Sheet Finisher)
Document Feeder Type	Standard Automatic Reversing Document Feeder (ARDF)
Document Feeder Original Size	5.5" x 8.5" - 11" x 17" (A5 - A3)
Document Feeder Paper Weight	Simplex: 11 - 34 lb. Bond (40 - 128 g/m ²) Duplex: 13 - 34 lb. Bond (52 - 128 g/m ²)
Document Feeder Capacity	100 sheets
Presort Reduction & Enlargement Ratios	25%, 50%, 65%, 73%, 78%, 85%, 93%, 100%, 121%, 129%, 155%, 200%, 400%
Zoom Range	25% to 400% in 1% increments
Standard Features	Auto Paper Select, Auto Tray Switch, Booklet/Magazine Copy, Center/Border Erase, Chapters, Combine Mode, Cover Insertion, Document Server (3,000 File Capacity), Duplex, Electronic/Rotate Sorting, Full-Color VGA Touch Screen Control Panel, ID Card Copy, 8 Job Presets, 25 Job Programs, Negative/Positive, OHP Slip Sheet, Sample Copy, Series Copy, Simple Screen, 1,000 User Codes, User Stamps
Dimensions (WxDxH) (includes ARDF)	23.1" x 26.8" x 35.9"
Weight	(587 x 680 x 913 mm) 151 lbs., 68.5 kg

*Bypass Tray only

**Typical electricity consumption by ENERGY STAR program

Print Specifications (Standard)

Processor Speed	533MHz
Connection Type	Standard: 10Base-T/100/1000BaseTX Ethernet, USB2.0 (2 ports on back of device, 1 port on Operation Panel), SD slot on Operation Panel, USB2.0 Type A, USB2.0 Type B, & SD Card Slot Optional: IEEE 802.11a/b/g/n Wireless LAN, USB Device Server (second NIC), & IEEE 1284 Parallel
Network Protocols	TCP/IP (IPv4, IPv6), IPX/SPX*
Supported Operating Systems	Windows Vista/7/8/XP, Windows Server 2003/2003R2/2008/2008R2/2012/2012R2; Netware* 6.5 or later, Unix Filters for Sun Solaris, HP-UX, SCO OpenServer, Red Hat Linux, IBM AIX, Mac OS X 10.6 or later, SAP R/3, NDS Gateway, IBM iSeries/AS400* using OS/400 Host Print Transform, Citrix Presentation Server 4.5/ Citrix Xen App 5.0, 6.0, 6.5 Web Image Monitor, Embedded @Remote, @Remote Office Appliance, @Remote Enterprise Pro, Device Manager NX Lite and Accounting, Device Manager NX Pro and Enterprise
Device Management Utilities	

Printer Languages	Standard: PCL5e/6, Optional: Adobe PostScript 3*, IPDS & XPS
Print Resolution	Up to 1200 x 1200 dpi
Font Support	PCL5e/6: 45 Scalable Fonts, 13 International Fonts P5: 136 Roman Fonts (optional) IPDS: 108 Roman Fonts (optional) Sample/Locked/Hold/Stored Print
Standard Features	*Requires optional SD Card for Netware

Scan Specifications (Standard)

Scan Speed (B&W & Full Color)	200/300 dpi: 79 ipm (Letter)
Scan Resolution	200/300 dpi: 80 ipm (A4) Color & B/W: Up to 600 dpi TWIN: Up to 1200 dpi Up to 11" x 17"
Platen Size	Standard: 10Base-T/100/1000BaseTX Ethernet Optional: IEEE 802.11a/b/g/n Wireless LAN
Connection Type	TCP/IP, NCP*, SMB, SMTP, POP, LDAP, FTP, IMAP4
Protocol	Single and Multi-Page TIFF/PDF, High Compression PDF, PDF/A and Single-Page JPEG
File Formats	Embedded Scan-to-Email/Folder/URL, TWIN and Color Scanning
Standard Features	*Requires optional SD Card for Netware

Fax Specifications (Option)

Fax Option Type M12	
Circuit	PS/TN, PBX
Compatibility	ITU-T G3
Resolution	200 x 200/100 dpi 400 x 400 dpi (optional)
Compression Method	MH, MR, MMR, JBIG
Scanning Speed (LEF)	Up to 68 spm (Letter/A4)
Modem Speed	33.6 Kbps with auto fallback
Transmission Speed	G3: 3 seconds per page (MMR Compression) G3: 2 seconds per page (JBIG Compression)
SAF Memory	4 MB standard/60 MB maximum 320 pages/4,800 pages
Max Auto Dials	2,000
Group Dials	100 (max. 500 numbers per group)
Standard Features	Dual Access, Duplex Reception, Image Rotation, 1 Hour Backup, LAN-Fax Capability, Internet Faxing (T.37), IP Faxing (T.38), Fax Forwarding to E-Mail/HDD/Folder Simultaneous Operation of up to 3 lines (G3 x 3)
Optional Features	

Security Features (Standard)

DOSS, HDD Encryption, S/MIME, IPsec Communication, Locked Print Password Encryption, Address Book Encryption, SSL, User Authentication, Quota Setting/Account Limit, SNMP v3, SMTP over SSL and PDF encryption

Optional Hardware Accessories

Paper Handling & Cabinet Options	
One-Tray Paper Bank (PB3150) ¹⁵	
Paper Capacity	550 sheets x 1 tray
Supported Paper Sizes	5.5" x 8.5" to 11" x 17" (A5 - A3)
Supported Paper Weight	16 - 80 lb. Bond/166 lb. Index (60 - 300 g/m ²)
Dimensions (WxDxH)	23.1" x 27" x 4.7" (587 x 685 x 120 mm)
Two-Tray Paper Bank (PB3220) ¹	
Paper Capacity	1,100 sheets (550 sheets x 2 trays)
Supported Paper Sizes	5.5" x 8.5" to 11" x 17" (A5 - A3)
Supported Paper Weight	16 - 80 lb. Bond/166 lb. Index (60 - 300 g/m ²)
Dimensions (WxDxH)	23.1" x 27" x 9.7" (587 x 685 x 247 mm)
Tandem Large Capacity Tray (PB3230) ¹	
Paper Capacity	2,000 sheets (1,000 sheets x 2)
Supported Paper Sizes	8.5" x 11" (A4)
Supported Paper Weight	16 - 80 lb. Bond/166 lb. Index (60 - 300 g/m ²)
Dimensions (WxDxH)	23.1" x 27" x 9.7" (587 x 685 x 247 mm)
Side Large Capacity Tray (RT3030) ⁴	
Paper Capacity	1,500 sheets
Supported Paper Sizes	8.5" x 11" (A4)
Supported Paper Weight	16 - 80 lb. Bond/166 lb. Index (60 - 300 g/m ²)
Dimensions (WxDxH)	13.4" x 21.4" x 11.4" (340 x 545 x 290 mm)
Cabinet Type F ¹	
Dimensions (WxDxH)	23.1" x 26.7" x 10" (586 x 679 x 256 mm)
Weight	Less than 29.3 lbs. (13.25 kg)
Output Trays & Finisher Options	
Internal Shift-Sort Tray (SH3070) ²	
Paper Capacity	250 sheets (8.5" x 11" or smaller) (A4 - A5) 125 sheets (8.5" x 14" or larger) (B4 - A3)
Supported Paper Sizes	5.5" x 8.5" to 12" x 18" (A6 - A3)
Supported Paper Weight	14 - 80 lb. Bond/166 lb. Index (52 - 300 g/m ²)
Bin Tray (BN3110)	
Supported Paper Sizes	5.5" x 8.5" to 11" x 17" (A6 - A3)
Supported Paper Weight	14 - 80 lb. Bond/166 lb. Index (52 - 300 g/m ²)
Paper Capacity	125 sheets
250-Sheet Internal Stapleless Finisher (SR3180) ³	
Supported Paper Sizes	5.5" x 8.5" to 12" x 18" (A6 - A3)
Supported Paper Weight	14 - 80 lb. Bond/166 lb. Index (52 - 300 g/m ²)

Stack Capacity	250 sheets (8.5" x 11" or smaller) (A4) 125 sheets (8.5" x 14" or larger) (B4 - A3) 8.5" x 11" to 11" x 17" (A4 - A3)
Bind Paper Size	17 - 20 lb. Bond (64 - 80 g/m ²)
Bind Paper Weight	Up to 5 sheets
Bind Position	Top
Dimensions (WxDxH)	17.1" x 20.3" x 5.9" (435 x 515 x 150 mm)

500-Sheet Internal Finisher (SR3130) ²	
Supported Paper Sizes	5.5" x 8.5" - 12" x 18" (A6 - A3)
Supported Paper Weight	14 - 80 lb. Bond/166 lb. Index (52 - 300 g/m ²)
Stack Capacity	500 sheets (8.5" x 11" or smaller) (A4) 250 sheets (8.5" x 14" or larger) (B4 - A3) 8.5" x 11" to 11" x 17" (A4 - A3)

Staple Paper Size	14 - 28 lb. Bond (52 - 105 g/m ²)
Staple Paper Weight	50 sheets (8.5" x 11") (A4) 30 sheets (8.5" x 14" or larger, and/or Mixed Sizes) (B4 - A3)
Staple Capacity	Top, Bottom, 2 Staples 21.5" x 20.6" x 6.7" (546 x 523 x 170 mm)

Staple Positions	Top, Bottom, 2 Staples
Dimensions (WxDxH)	21.5" x 20.6" x 6.7" (546 x 523 x 170 mm)

2-/3-Hole Punch Unit (PU3040NA)	
(Optional; Installs inside SR3130 Internal Finisher)	

1,000-Sheet Finisher (SR3140) ^{2,3,4}	
Supported Paper Sizes	Proof Tray: 5.5" x 8.5" - 11" x 17" (A6 - A3) Shift Tray: 5.5" x 8.5" - 11" x 17" (A6 - A3)

Supported Paper Weight	Proof Tray: 14 - 45 lb. Bond/93 lb. Index (52 - 169 g/m ²) Shift Tray: 14 - 80 lb. Bond/166 lb. Index (52 - 300 g/m ²)
------------------------	---

Stack Capacity	Proof Tray: 250 sheets (8.5" x 11") (A4) 50 sheets (8.5" x 14" or larger) (B4) Shift Tray: 1,000 sheets (8.5" x 11") (A4) 500 sheets (8.5" x 14" or larger) (B4) 50 sheets (8.5" x 11") (A4)
----------------	--

Staple Capacity	50 sheets (8.5" x 11") (A4) 30 sheets (8.5" x 14" or larger) (B4)
Staple Paper Size	8.5" x 11" - 11" x 17" (A4 - A3)
Staple Paper Weight	14 - 28 lb. Bond (52 - 105 g/m ²)
Staple Positions	Top, Bottom 2 Staples
Dimensions (WxDxH)	22.2" x 24.4" x 37.8" (563 x 620 x 960 mm)

1,000-Sheet Booklet Finisher (SR3150) ^{2,3,4}	
Supported Paper Sizes	Proof Tray: 5.5" x 8.5" - 11" x 17" (A6 - A3) Shift Tray: 5.5" x 8.5" - 11" x 17" (A6 - A3)

Supported Paper Weight	Proof Tray: 14 - 45 lb. Bond (52 - 169 g/m ²) Shift Tray: 14 - 80 lb. Bond/166 lb. Index (52 - 300 g/m ²)
------------------------	--

Stack Capacity	Booklet Tray: 14 - 28 lb. Bond (52 - 105 g/m ²) Proof Tray: 250 sheets (8.5" x 11" or smaller) (A4) 50 sheets (8.5" x 14" or larger) (B4 - A3) Shift Tray: 1,000 sheets (8.5" x 11" or smaller) (A4)
----------------	---

Staple Capacity	500 sheets (8.5" x 14" or larger) (B4 - A3) Booklet Tray: 20 Sets (2 - 5 sheets), 10 Sets (6 - 10 sheets) & 7 Sets (11 - 15 sheets)
-----------------	---

Staple Paper Size	Normal Staple: 8.5" x 11" - 11" x 17" (A4 - A3) Saddle Stitch: 8.5" x 11" - 11" x 17" (A4 - A3)
-------------------	--

Staple Capacity	Normal Staple: 50 sheets (8.5" x 11") (A4), 30 sheets (8.5" x 14" or larger) (B4 - A3)
-----------------	---

Staple Paper Size	Normal Staple: 8.5" x 11" - 11" x 17" (A4 - A3) Saddle Stitch: 8.5" x 11" - 11" x 17" (A4 - A3)
-------------------	--

Staple Paper Weight	14 - 28 lb. Bond (52 - 105 g/m ²)
Staple Positions	Top, Bottom, 2 Staples, Booklet
Dimensions (WxDxH)	22.2" x 24.4" x 37.8" (563 x 620 x 960 mm)

2-/3-Hole Punch Unit (PU3050NA)	
(Optional; Installs inside SR3150 or SR3140 Finishers)	

Additional Accessory Options

Bridge Unit BU3070, Browser Unit Type M12, Card Reader Bracket Type 3352, Copy Data Security Unit Type G, Embedded HotSpot Type S, ESP XG-PCS-15D, Fax Connection Unit Type M12, File Format Converter Type E, G3 Interface Unit Type M12, IEEE 1284 Interface Board Type A, IEEE 802.11a/b/g/n Interface Unit Type M2, IPDS Unit Type M12, Key Counter Bracket Type M3, Memory Unit Type M12, 64MB, OCR Unit Type M2, Optional Counter Interface Unit Type M12, PostScript3 Unit Type M12, SD Card for NetWare Printing Type M12, Smart Card Reader Built-in Unit Type M12, Smart Operation Panel Type M3, XPS Direct Print Option Type M12, USB Device Server Option Type M12

Note: Some accessories require additional equipment or may be prerequisites for other options. Some images contained in this brochure do not show the stabilizers that ship with the optional paper feed units. Some options may not be available at the time of market release. Specifications are subject to change without notice.

For maximum performance and yield, we recommend using genuine Ricoh parts and supplies.

- 1 Cannot be installed together
- 2 Cannot be installed together
- 3 Requires Bridge Unit BU3070
- 4 Requires installation of Two-Tray Paper Bank (PB3220) or Tandem LCT (PB3230)
- 5 Requires installation of Caster Table Type M3



www.ricoh-usa.com

Ricoh Americas Corporation, 70 Valley Stream Parkway, Malvern, PA 19355, 1-800-63-RICOH
RICOH and the Ricoh Logo are registered trademarks of Ricoh Company, Ltd. All other trademarks are the property of their respective owners. ©2014 Ricoh Americas Corporation. All rights reserved. The content of this document, and the appearance, features and specifications of Ricoh products and services are subject to change from time to time without notice. Products are shown with optional features. While care has been taken to ensure the accuracy of this information, Ricoh makes no representation or warranties about the accuracy, completeness or adequacy of the information contained herein, and shall not be liable for any errors or omissions in these materials. Actual results will vary depending upon use of the products and services, and the conditions and factors affecting performance. The only warranties for Ricoh products and services are as set forth in the express warranty statements accompanying them.

R3530

